



ISO 9001:2008 Certified Companies

4091 S. Eliot St., Englewood, CO 80110-4396 • 303-781-8486 • Fax 303-761-7939

## 60PS Series Couplings

Tubing Size 3/8" - 3/4"  
3/8" Flow Polysulfone



Produced in high performance thermoplastic Udel® Polysulfone, these 3/8" flow size couplings are more durable and stable at higher temperatures. The 60PS Series couplings offer a new and improved Panel Mount design that has a more reliable, thumb-latch which makes it more durable, easier and faster to use. All 60PS couplings interconnect with all other 60 Series couplings as well as other similar industry thumb-latch type high flow couplings.

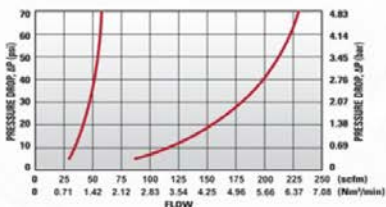
### Performance Ratings:

- Operating Pressure: Vacuum to 125 psi; (8.6bar)
- Temperature: -40°F to 280°F (-40°C to 138°C)
- Flow Capacity: 3/8" Size

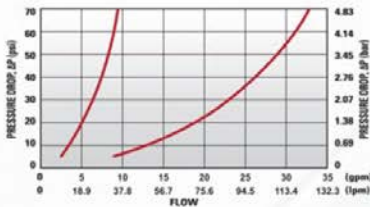
### Materials & Construction:

- Bodies & Terminations: Udel® Polysulfone
- Internal Valves: Udel® Polysulfone
- Internal Valve Springs: 316 Stainless Steel
- External Springs & Pins: Stainless Steel
- O-rings: Peroxide-cured EPDM (others available)
- Thumb-latch: Udel® Polysulfone

### 60PS Series Air Flow



### 60PS Series Water Flow



### 60PS Series Temperature



### FLOW RATES

The data below shows liquid flow rates for LinkTech couplings. Each coupling combination was tested at 70°F (21°C).

### C<sub>v</sub> Values for 60PS Series Couplings

SOCKETS	60PS-PE2-06	60PSV-PE2-06	60PS-PE2-08	60PSV-PE2-06	60PS-PE4-06	60PSV-PE4-06	60PS-PE4-08	60PSV-PE4-08	60PS-PE1-06	60PSV-PE1-06	60PS-PE1-08	60PSV-PE1-08	60PS-PE2-12	60PSV-PE2-12
60PSV-SE1-06	1.27	1.27	1.62	1.51	1.14	1.14	1.46	1.36	1.80	1.58	1.70	1.65	-	-
60PSV-SE1-08	1.28	1.34	1.62	1.51	1.15	1.24	1.46	1.36	1.81	1.54	1.72	1.56	-	-
60PSV-SE3-06	1.07	1.00	1.17	1.14	0.96	0.90	1.05	1.03	1.33	1.26	1.30	1.24	-	-
60PSV-SE3-08	1.25	1.23	1.61	1.52	1.13	1.11	1.45	1.37	1.79	1.60	1.68	1.56	-	-
60PSV-SE2-06	1.07	1.00	1.17	1.14	0.96	0.90	1.05	1.03	1.33	1.26	1.30	1.24	-	-
60PSV-SE2-08	1.25	1.23	1.61	1.52	1.13	1.11	1.45	1.37	1.79	1.60	1.68	1.56	-	-
60PS-S2-12	-	-	-	-	-	-	-	-	-	-	-	-	3.94	-
60PSV-SE2-12	-	-	-	-	-	-	-	-	-	-	-	-	-	2.04

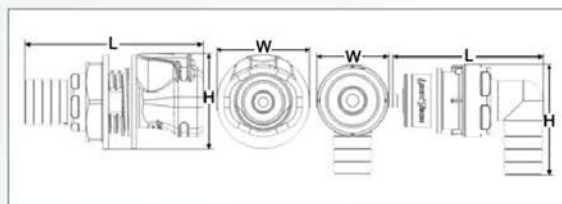
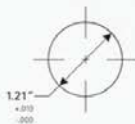
Specific coupling combination flow rates can be determined by using this formula:

$$Q = C_v \sqrt{\frac{\Delta P}{S}}$$

- Q = Flow rate in gallons per minute
- C<sub>v</sub> = Average flow rates (see chart)
- ΔP = Pressure drop across coupling (psi)
- S = Specific gravity of liquid.

	PANEL OPENING	MAX PANEL THICKNESS	MIN PANEL THICKNESS
SOCKETS	See Drawing	0.3"	0.03"
PLUGS	1.21"	0.3"	0.03"

PANEL NUT HEX SIZE
1.375"



Reference Dimensions: L = Length, W = Width, H = Height